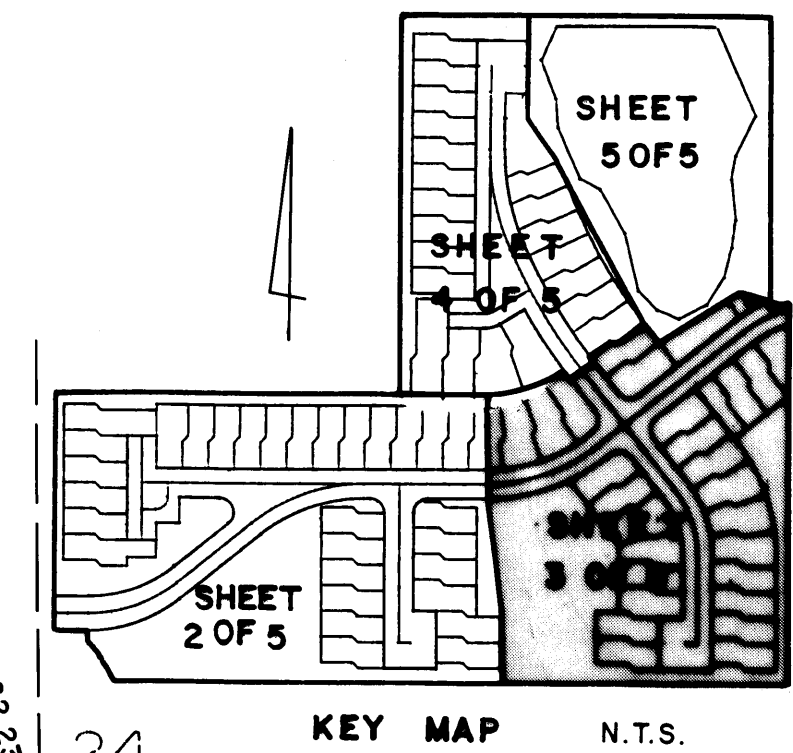
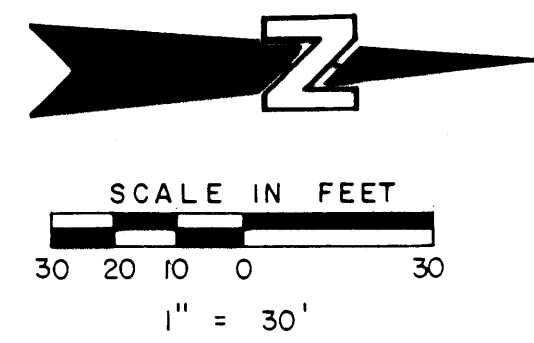


A PLAT OF

PALM POINTE AT MARTIN DOWNS

BEING PLAT NO. 56 OF MARTIN DOWNS P.U.D. LYING IN SECTION 13, TOWNSHIP 38 S., RANGE 40 E., BEING A REPLAT OF A PORTION OF TRACTS 46, 51 AND 52, PLAT OF W.M.T. PALM CITY FARMS, AS RECORDED IN PLAT BOOK 6, PAGE 42 PALM BEACH (NOW MARTIN) COUNTY, FLORIDA.



I, MARSHA STILLER, CLERK OF THE CIRCUIT COURT OF MARTIN COUNTY, FLORIDA, HEREBY CERTIFY THAT THIS PLAT WAS FILED FOR RECORD IN PLAT BOOK 114, PAGE 32, MARTIN COUNTY, FLORIDA, PUBLIC RECORDS, THIS 24 DAY OF December, 1976

MARSHA STILLER,
CLERK CIRCUIT COURT
MARTIN COUNTY, FLORIDA.

BY: *Dorothy Langston*
DEPUTY CLERK

FILE NO. 1210436

(CIRCUIT COURT SEALS)

NOTES

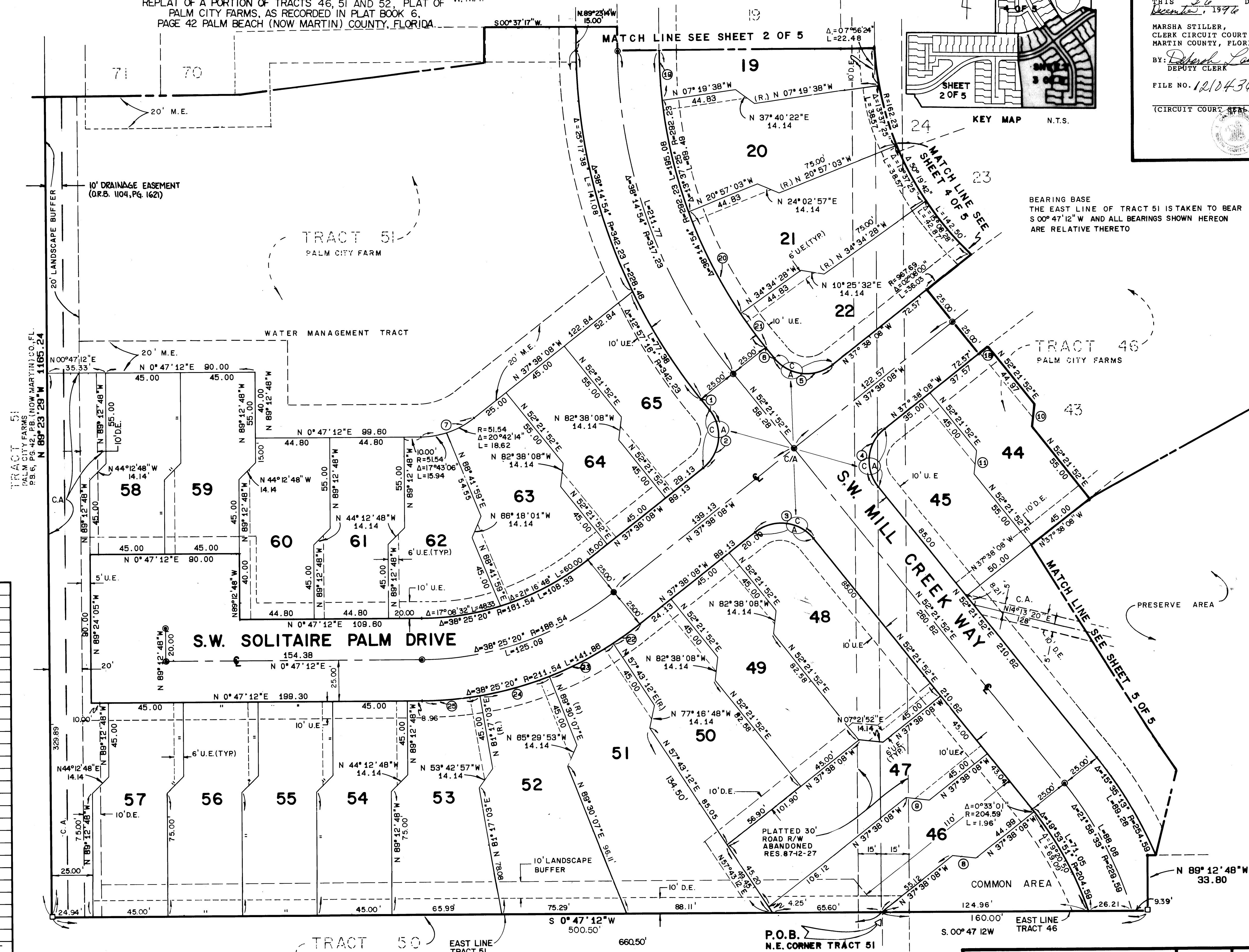
- EACH NUMBERED TRACT DEPICTED HEREON IS A LOT
- THERE SHALL BE NO BUILDINGS OR ANY OTHER KIND OF CONSTRUCTION OR TREES OR SHRUBS PLACED ON DRAINAGE EASEMENTS
- THERE SHALL BE NO BUILDINGS OR PERMANENT STRUCTURES PLACED ON UTILITY EASEMENTS

LEGEND

- DENOTES P.C.P. (PERMANENT CONTROL POINT) # 959
- DENOTES P.R.M. (PERMANENT REFERENCE MON. # 959 SET)
- DENOTES P.R.M. (PERMANENT REFERENCE MON. # 959 FOUND)
- U.E. DENOTES UTILITY EASEMENT
- D.E. DENOTES DRAINAGE EASEMENT
- M.E. DENOTES MAINTENANCE EASEMENT
- R. DENOTES RADIAL LINES
- ⓐ DENOTES "CONTROL OF ACCESS" NO VEHICULAR TRAFFIC WITHOUT PRIOR APPROVAL OF THE BOARD OF COUNTY COMMISSIONERS OF MARTIN COUNTY, FLORIDA.
- C.A. COMMON AREA

DATA

NO.	DELTA/BEARING	RADIUS	LEN./DIST.	TANGENT
1	N 52°21'52"E		8.28	
2	90°00'00"	25.00	39.27	25.00
3	90°00'00"	25.00	39.27	25.00
4	90°00'00"	25.00	39.27	25.00
5	90°00'00"	25.00	39.27	25.00
6	N 52°21'52"E		8.28	
7	38°25'20"	51.54	34.56	17.96
8	N 07°21'52"E		14.14	
9	N 07°21'52"E		14.14	
10	N 82°38'08"W		14.14	
11	N 82°38'08"W		14.14	
12	07°56'24"	182.23	25.25	12.65
13				
14				
15				
16	22°35'41"	182.23	71.86	36.40
17	26°12'59"	182.23	83.38	42.43
18	0°27'51"	917.69	7.43	3.72
19	05°58'44"	292.23	30.49	15.26
20	13°37'26"	292.23	69.49	34.91
21	05°01'19"	292.23	25.61	12.82
22	05°21'20"	211.54	19.77	9.89
23	11°46'55"	211.54	43.50	21.83
24	11°46'56"	211.54	43.50	21.83
25	09°30'09"	211.54	35.08	17.58
26	07°43'13"	321.54	43.33	21.70
27	11°46'56"	321.54	66.12	33.18
28	11°46'55"	321.54	66.12	33.18
29				
30				



BEARING BASE
THE EAST LINE OF TRACT 51 IS TAKEN TO BEAR S 00°47'12" W AND ALL BEARINGS SHOWN HEREON ARE RELATIVE THERETO

TRACT 50
PALM CITY FARMS
P.B. 6, PG. 42
P.B. (NOW MARTIN) CO., FL.

P.O.B.
N.E. CORNER TRACT 51

LINDAHL, BROWNING, FERRARI & HELLSTROM, INC.
CONSULTING ENGINEERS, PLANNERS & SURVEYORS

P.O. BOX 117
JUPITER, FLORIDA 33468

1985 SOUTH 20TH STREET
SUITE 202
FORT PINECLIFF, FLORIDA 33407

3 5